

Christine Streuli

Preconceptions

Opening reception: Saturday, May 18, 4pm - 7pm

May 18 - July 31, 2024

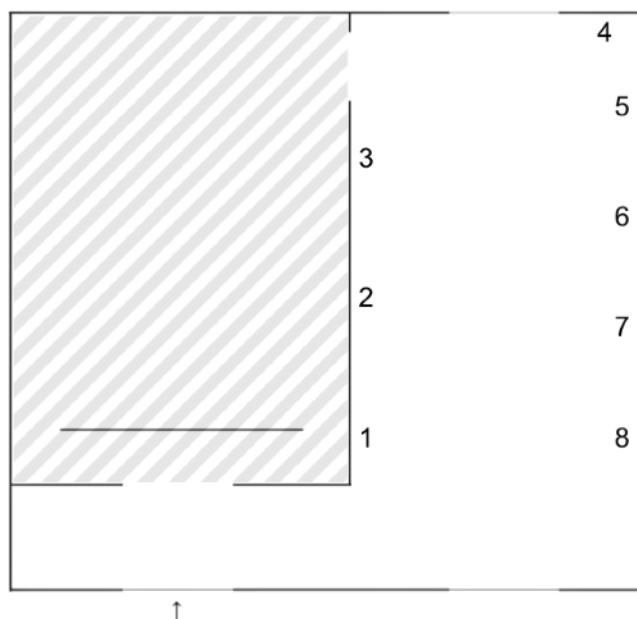
Christine Streuli's artistic approach encompasses meticulous planning, digital experimentation, and a deliberate defiance of conventional notions of artistic originality. Through her adept manipulation of colour, form, and layering, she crafts immersive visual spectacles that beckon viewers to delve deeply into her creations. By pushing the boundaries of painting, Streuli seamlessly navigates between the realms of the absurd, the coherent, and the deconstructed, skilfully balancing on the precipice between eruption and collapse throughout her creative process.

While her paintings exude an aura of spontaneity and gesture, evoking a sense of enigmatic primal energy, they are actually grounded in careful planning, including premeditated numerical simulations. Central to Streuli's oeuvre are inquiries into the role of the digital realm in art and the reproducibility of original gestures in painting. Her deliberate choice of vibrant neon hues, repetitive geometric motifs, and nods to significant art movements amplifies her exploration of contemporary painting's pressing questions, particularly in light of advancements in Artificial Intelligence.

Streuli continually references the aesthetic qualities of reproduction and digital media, often incorporating abrupt interruptions in her forms reminiscent of digital image glitches. These interruptions serve to highlight the precision of her brushwork, accentuating the background details. Her latest works exhibit elements reminiscent of concrete art, with geometric shapes forming their foundational structure. Through successive layers of sprayed or overlaid color, Streuli disrupts the initial orderliness of her compositions, often culminating in the application of stickers or adhesive foils that introduce additional color and shapes onto the canvas.

The resulting superimpositions blur the distinction between background and foreground, imbuing the painting's surface with a sense of spatial depth. This effect is further intensified by the scale of Streuli's canvases, challenging viewers' perceptions and extending the visual experience beyond the confines of the picture plane.

GALERIA FILOMENA SOARES



1
Falling apart (short version)_02, 2023
Mixed media on canvas
166 x 111 cm, framed

2
Peeling_02, 2023
Mixed media on canvas
200 x 140 cm, framed

3
Peeling_03, 2023
Mixed media on canvas
200 x 140 cm, framed

4
Distel/Thistle_01, 2022
Mixed media on canvas
135 x 105 cm, framed

5
Falling apart (permanent version)_03, 2023
Mixed media on canvas
195 x 135 cm

6
Falling apart (permanent version)_04, 2023
Mixed media on canvas
195 x 135 cm

7
Falling apart (permanent version)_06, 2023
Mixed media on canvas
195 x 135 cm

8
Falling apart (permanent version)_02, 2023
Mixed media on canvas
195 x 135 cm

Christine Streuli (b. Switzerland, 1975) lives and works in Berlin.

Streuli completed her art studies at the Hochschule für Gestaltung in Zurich and at the Universität der Künste Berlin, where she is currently a visiting professor. In spring 2017, the artist was awarded the Fred Thieler Prize of the Berlinische Galerie. In recent years, she has had solo exhibitions at the Kunstmuseum Thun, Haus am Waldsee, Kunsthalle Zürich, Kunstmuseum Luzern and other renowned institutions. In 2007, she was part of the Swiss Pavilion at the Venice Biennale.